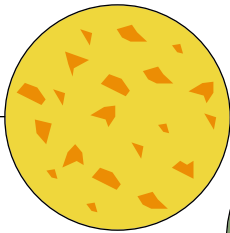


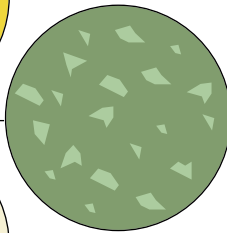
STANDARD COLOURS

RINOLEXQUISIT

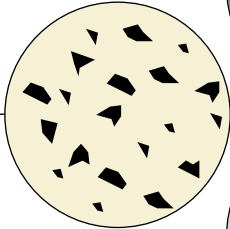
101236  
lemon yellow  
Zitronengelb



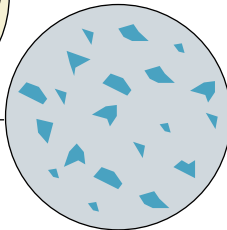
601122  
reseda green  
Resedagrün



101401  
ivory  
Elfenbein



703500  
light grey  
Lichtgrau



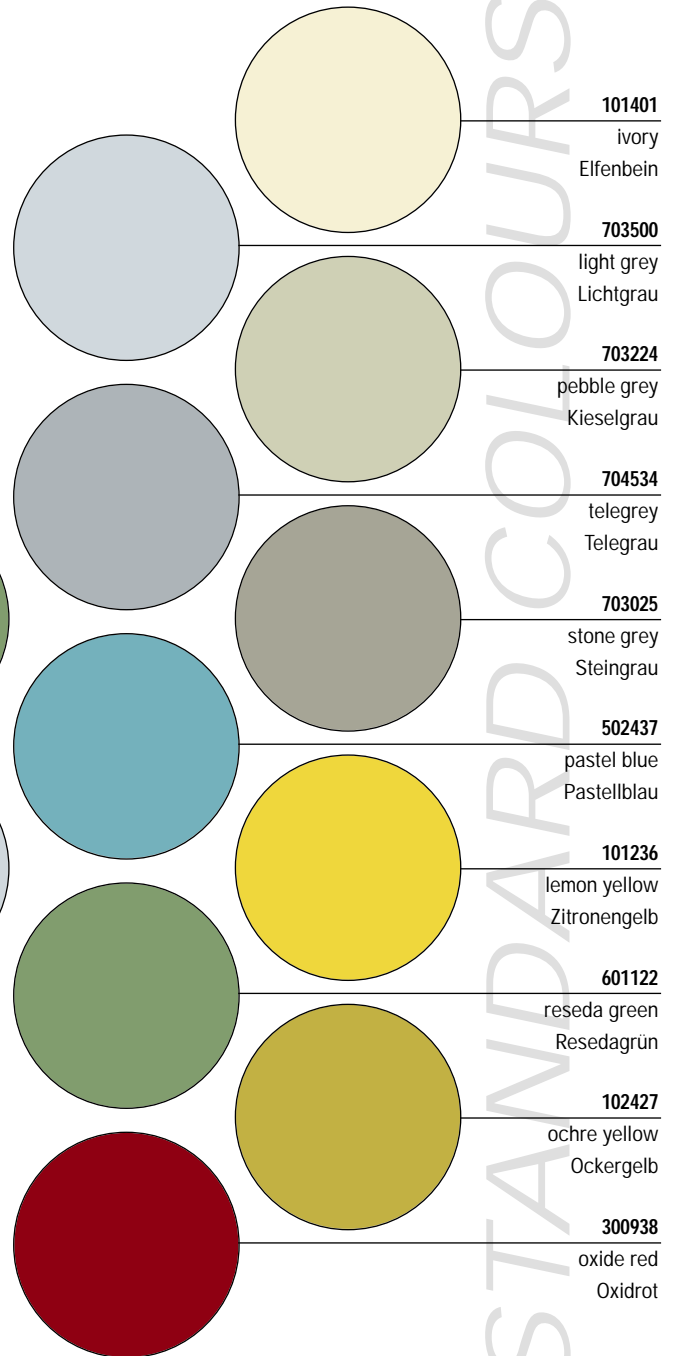
Diese Abbildungen sollen einen Eindruck von den zahlreichen Kombinationsmöglichkeiten der Farben und Chips liefern.

These illustrations are meant to give a sense of the numerous colour and pattern combinations possible.

Andere Farben sind auf Anfrage möglich.  
Other colours are available on request.

Farbabweichungen zwischen Farbkarte und fertig verlegtem RINOL Bodenbelag sind möglich.

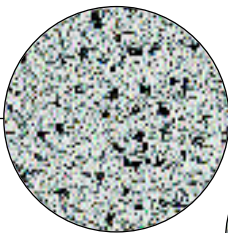
Divergences in colour between the colour chart and finished RINOL floor covering are possible.



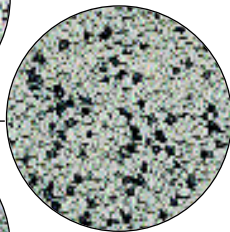
# RINOLSAFETY (11 SY – 18 SY)

## RINOLSOLID (1 SD – 10 SD) RINOLSAFETY (1 SY – 10 SY)

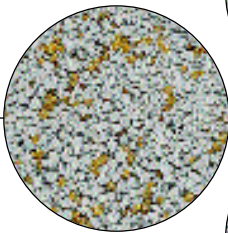
Nr. 1



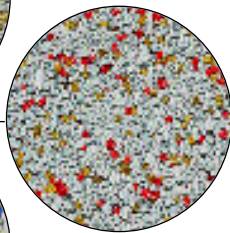
Nr. 2



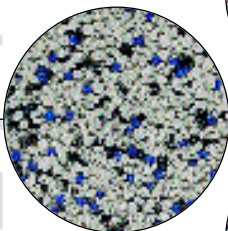
Nr. 3



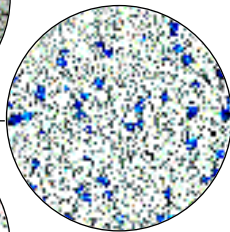
Nr. 4



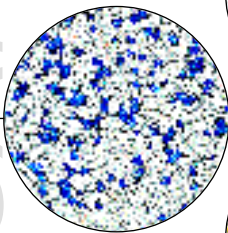
Nr. 5



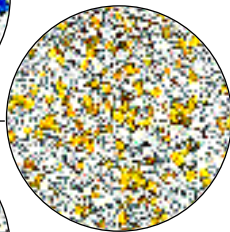
Nr. 6



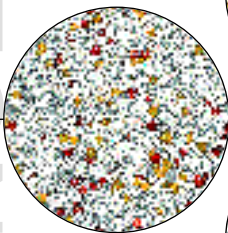
Nr. 7



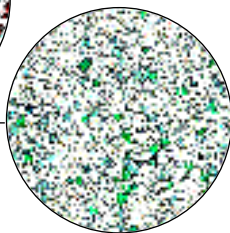
Nr. 8



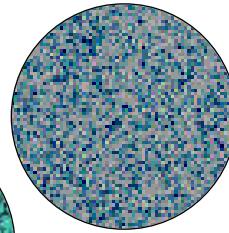
Nr. 9



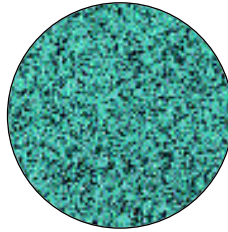
Nr. 10



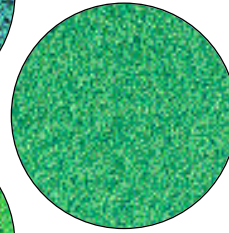
Nr. 11



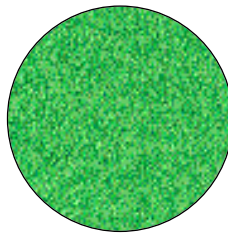
Nr. 12



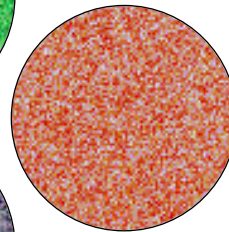
Nr. 13



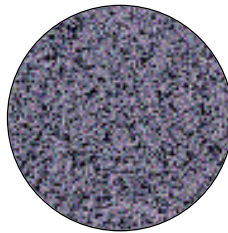
Nr. 14



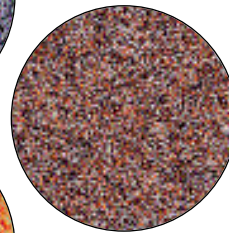
Nr. 15



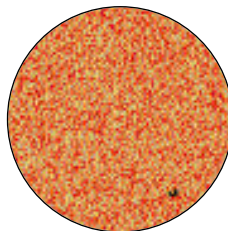
Nr. 16



Nr. 17



Nr. 18



**Farbabweichungen zwischen Farbkarte und fertig verlegtem RINOL Bodenbelag sind möglich.**

Divergences in colour between the colour chart and finished RINOL floor covering are possible.

**Für Schäden, die durch Druckfehler oder Unvollständigkeit dieser Farbkarte entstehen, übernehmen wir keine Haftung.**

This colour chart is distributed as is, without warranty of any kind, either expressed or implied. While every precaution has been taken in the preparation of this chart, we assume no responsibility for errors or omissions.